

**Cotton Creek School
Wauconda CUSD 118
Island Lake, ILLINOIS**



**ILLINOIS
SCHOOL
REPORT
CARD**

GRADES : K 1 2 3 4 5

State and federal laws require public school districts to release report cards to the public each year.

Starting in 2009, charter school information is included in district statistics.

STUDENTS

RACIAL/ETHNIC BACKGROUND AND OTHER INFORMATION

	White	Black	Hispanic	Asian/ Pacific Islander	Native American	Multi racial /Ethnic	Percent Low- Income	Percent Limited- English- Proficient	Percent IEP	High Sch. Dropout Rate	Chronic Truancy Rate	Mobility Rate	Attendance Rate	Total Enrollment
School	67.1	0.8	25.7	1.8	0.2	4.4	26.6	16.6	12.0		0.0	7.8	94.9	657
District	71.7	0.6	20.4	3.4	0.1	3.7	22.4	10.6	11.5		0.1	7.6	94.6	4,348
State	52.8	18.8	21.1	4.2	0.2	2.9	45.4	7.6	13.1		3.6	13.0	93.9	2,064,312

Low-income students come from families receiving public aid; live in institutions for neglected or delinquent children; are supported in foster homes with public funds; or are eligible to receive free or reduced-price lunches.

IEP Students are those students eligible to receive special education services.

Limited-English-proficient students are those students eligible for transitional bilingual programs.

Mobility rate is based on the number of times students enroll in or leave a school during the school year.

Chronic truants are students who are absent from school without valid cause for 18 or more of the last 180 school days.

INSTRUCTIONAL SETTING

PARENTAL CONTACT*	
	Percent
School	100.0
District	100.0
State	96.2

STUDENT-TO-STAFF RATIOS			
Pupil- Teacher Elementary	Pupil- Teacher Secondary	Pupil- Certified Staff	Pupil- Administrator
--	--	--	--
18.1	20.2	13.2	212.1
18.2	18.2	13.3	203.8

* Parental contact includes parent-teacher conferences, parental visits to school, school visits to home, telephone conversations, and written correspondence.

AVERAGE CLASS SIZE (as of the first school day in May)

Grades	K	1	2	3	4	5	6	7	8	9 - 12
School	18.6	16.8	19.0	22.8	25.5	23.4				
District	19.1	20.3	19.3	22.3	21.9	23.6				
State	20.7	21.2	21.4	22.1	22.6	22.8				

TIME DEVOTED TO TEACHING CORE SUBJECTS (Minutes Per Day)

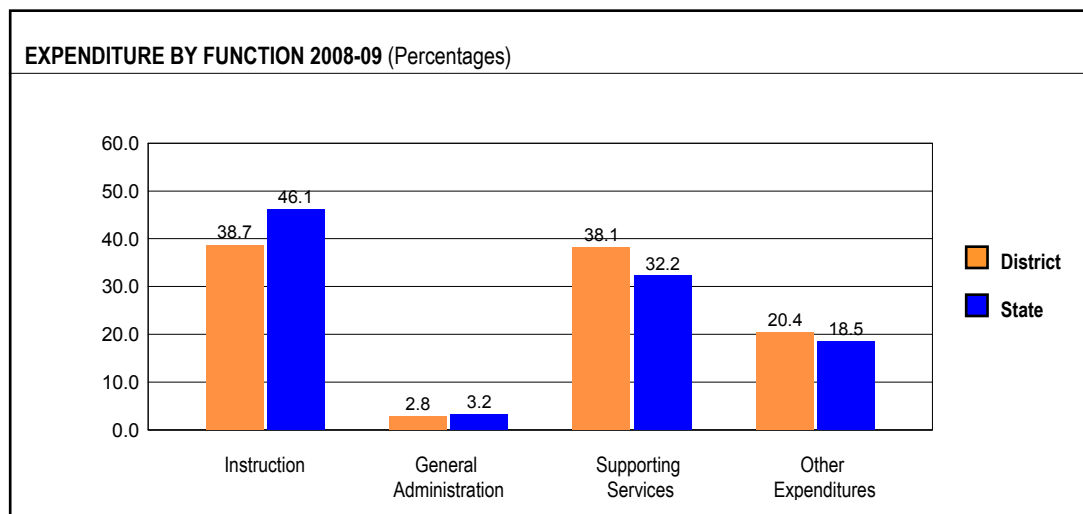
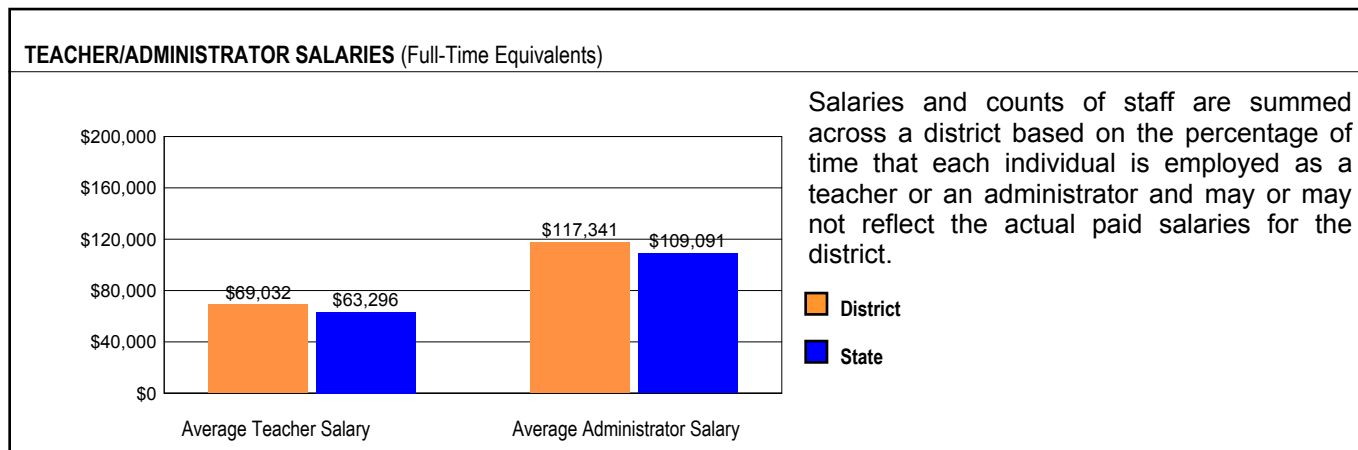
Grades	Mathematics			Science			English/Language Arts			Social Science		
	3	6	8	3	6	8	3	6	8	3	6	8
School	55			30			150			30		
District	55			30			150			30		
State	59			30			145			30		

TEACHER INFORMATION (Full-Time Equivalents)								
	White	Black	Hispanic	Asian/ Pacific Islander	Native American	Male	Female	Total Number
District	96.7	0.0	2.6	0.7	0.0	19.7	80.3	273
State	85.2	8.1	5.2	1.4	0.2	23.0	77.0	132,502

TEACHER INFORMATION (Continued)					
	Average Teaching Experience (Years)	% of Teachers with Bachelor's Degrees	% of Teachers with Master's & Above	% of Teachers with Emergency or Provisional Credentials	% of Classes Not Taught by Highly Qualified Teachers
School	--	--	--	2.4	0.0
District	11.5	29.5	70.5	0.4	0.0
State	12.7	42.2	57.4	0.5	0.7

Some teacher/administrator data are not collected at the school level.

SCHOOL DISTRICT FINANCES



REVENUE BY SOURCE 2008-09				EXPENDITURE BY FUND 2008-09			
	District	District %	State %		District	District %	State %
Local Property Taxes	\$35,792,412	79.3	58.4	Education	\$32,162,029	66.3	69.6
Other Local Funding	\$2,328,639	5.2	6.9	Operations & Maintenance	\$3,763,222	7.8	7.9
General State Aid	\$1,480,002	3.3	14.5	Transportation	\$4,147,551	8.5	3.8
Other State Funding	\$4,017,840	8.9	8.3	Debt Service	\$5,213,769	10.7	7.0
Federal Funding	\$1,540,840	3.4	11.9	Tort	\$483,865	1.0	1.2
TOTAL	\$45,159,733			Municipal Retirement/ Social Security	\$1,443,729	3.0	1.8
				Fire Prevention & Safety	\$0	0.0	0.8
				Site & Construction/ Capital Improvement	\$1,308,089	2.7	7.9
				TOTAL	\$48,522,254		

OTHER FINANCIAL INDICATORS				
	2007 Equalized Assessed Valuation per Pupil	2007 Total School Tax Rate per \$100	2008-09 Instructional Expenditure per Pupil	2008-09 Operating Expenditure per Pupil
District	\$219,068	4.08	\$4,766	\$10,460
State	**	**	\$6,483	\$11,197

** Due to the way Illinois school districts are configured, state averages for equalized assessed valuation per pupil and total school tax rate per \$100 are not provided.

Equalized assessed valuation includes all computed property values upon which a district's local tax rate is calculated.

Total school tax rate is a district's total tax rate as it appears on local property tax bills.

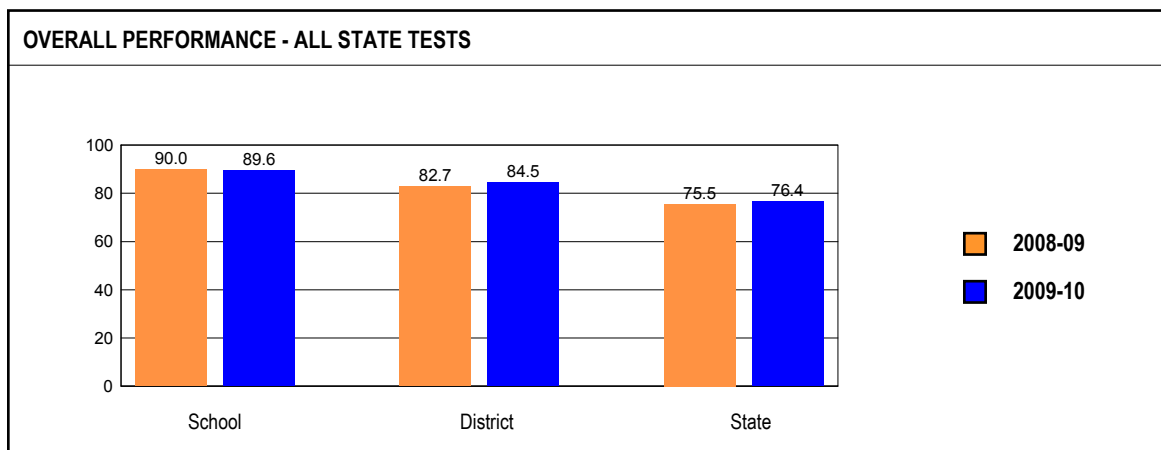
Instructional expenditure per pupil includes the direct costs of teaching pupils or the interaction between teachers and pupils.

Operating expenditure per pupil includes the gross operating cost of a school district excluding summer school, adult education, bond principal retired, and capital expenditures.

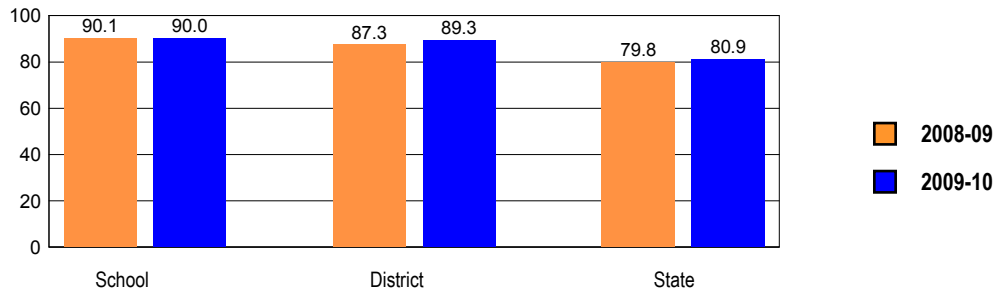
ACADEMIC PERFORMANCE

OVERALL STUDENT PERFORMANCE

These charts present the overall percentages of state test scores categorized as meeting or exceeding the Illinois Learning Standards for your school, district, and the state. They represent your school's performance in reading, mathematics, and science.

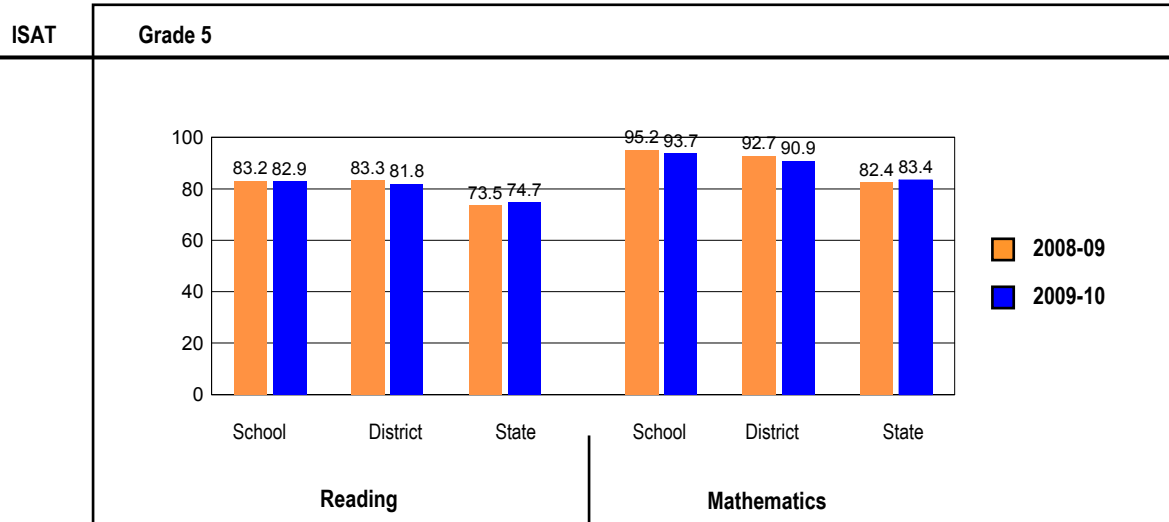
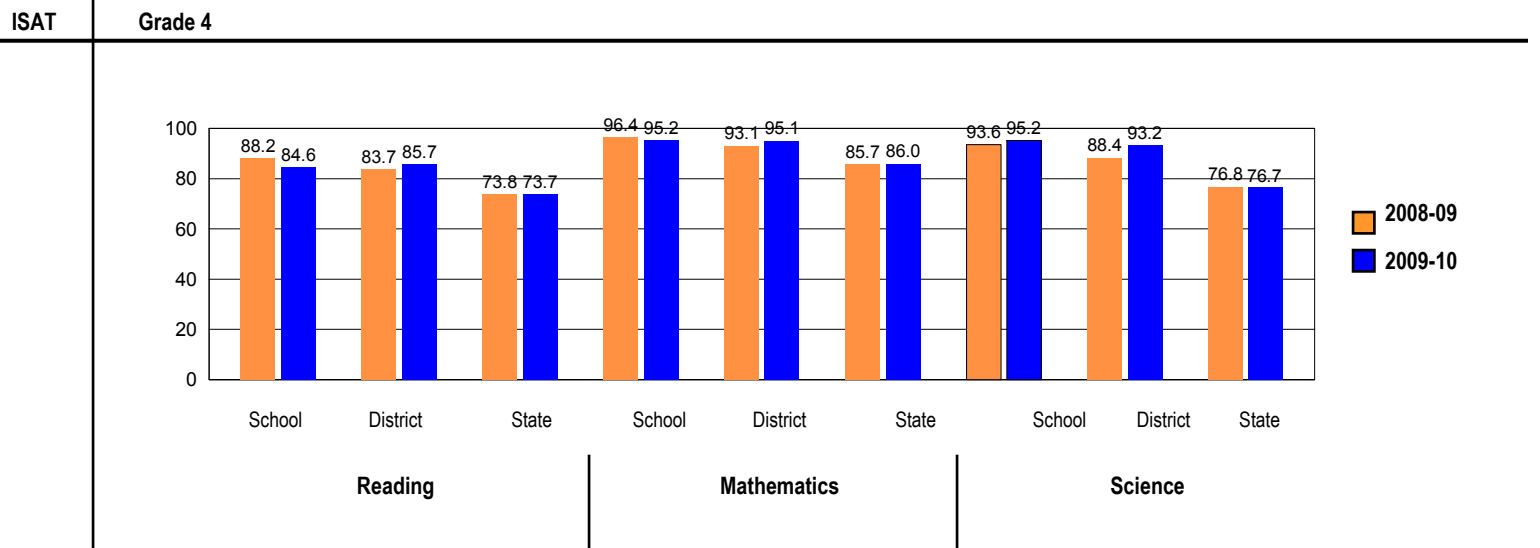
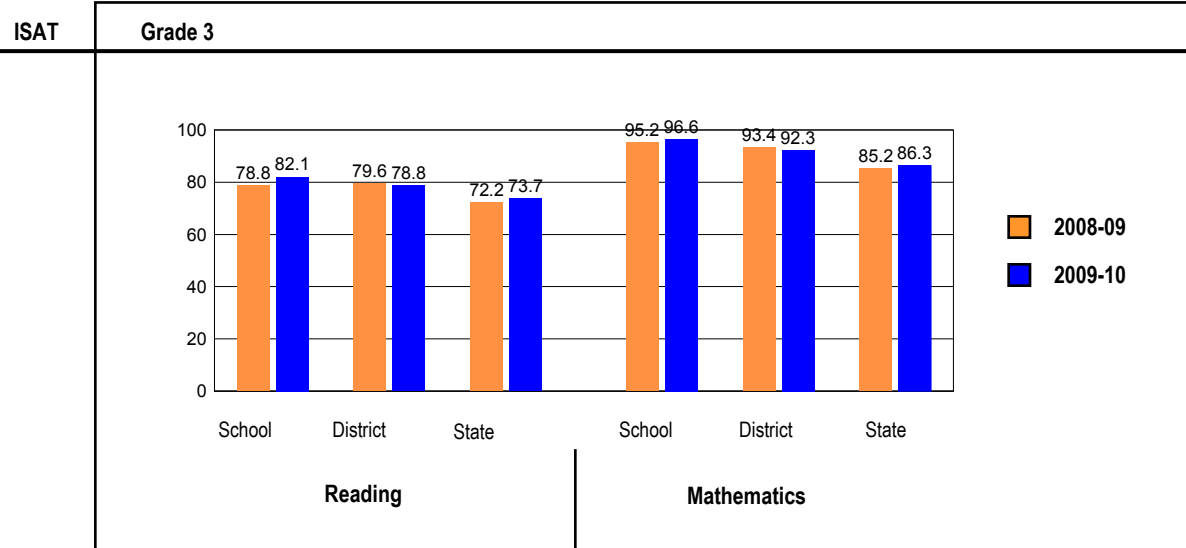


OVERALL ILLINOIS STANDARDS ACHIEVEMENT TEST (ISAT) PERFORMANCE



ISAT PERFORMANCE

These charts provide information on attainment of the Illinois Learning Standards. They show the percents of student scores meeting or exceeding Standards for the grades and subjects tested on ISAT.



PERFORMANCE ON STATE ASSESSMENTS

Federal law requires that student achievement results for reading, mathematics, and science for schools providing Title I services be reported to the general public.

The Illinois Standards Achievement Test (ISAT) is administered to students in grades 3 through 8. The Prairie State Achievement Examination (PSAE) is administered to students in grade 11. The Illinois Alternate Assessment (IAA) is administered to students with disabilities whose Individualized Education Programs (IEPs) indicate that participation in the ISAT or PSAE would not be appropriate.

Students with disabilities have an IEP (No Child Left Behind Act). An IEP is a written plan for a child with a disability who is eligible to receive special education services under the Individuals with Disabilities Education Act.

Reading and Mathematics are tested in grades 3 through 8 and 11. Science is tested in grades 4, 7, and 11.

In order to protect students' identities, test data for groups of fewer than ten students are not reported.

PERCENTAGE OF STUDENTS NOT TESTED IN STATE TESTING PROGRAMS FOR READING AND MATHEMATICS														
		Gender			Racial/Ethnic Background						LEP	Migrant	Students with Disabilities	Economically Disadvantaged
		All	Male	Female	White	Black	Hispanic	Asian/Pacific Islander	Native American	Multi racial /Ethnic				
School	*Enrollment	339	179	160	239	3	78	5	0	14	54	0	55	115
	Reading	0.0	0.0	0.0	0.0		0.0			0.00	0.0		0.0	0.0
	Mathematics	0.0	0.0	0.0	0.0		0.0			0.00	0.0		0.0	0.0
District	*Enrollment	2,254	1,198	1,056	1,626	16	459	71	2	80	211	0	284	615
	Reading	0.0	0.1	0.0	0.0	0.0	0.2	0.0		0.0	0.0		0.0	0.0
	Mathematics	0.0	0.1	0.0	0.0	0.0	0.2	0.0		0.0	0.0		0.0	0.0
State	*Enrollment	1,068,202	545,784	522,252	565,375	199,071	219,899	44,975	2,039	36,134	67,911	346	150,721	503,002
	Reading	0.2	0.3	0.2	0.1	0.5	0.2	0.2	0.2	0.2	0.3	0.9	0.5	0.3
	Mathematics	0.2	0.3	0.2	0.1	0.5	0.2	0.2	0.2	0.2	0.3	0.9	0.5	0.3

* Enrollment as reported during the testing windows for grades 3 - 8 and 11.

PERCENTAGE OF STUDENTS NOT TESTED IN STATE TESTING PROGRAMS FOR SCIENCE ONLY														
		Gender			Racial/Ethnic Background						LEP	Migrant	Students with Disabilities	Economically Disadvantaged
		All	Male	Female	White	Black	Hispanic	Asian/Pacific Islander	Native American	Multi racial /Ethnic				
School	*Enrollment	107	55	52	80	2	18	3	0	4	12	0	20	34
	Science	0.0	0.0	0.0	0.0		0.0				0.0		0.0	0.0
District	*Enrollment	945	477	468	699	10	181	19	0	36	60	0	114	230
	Science	0.1	0.2	0.0	0.0	0.0	0.6	0.0		0.0	0.0		0.0	0.0
State	*Enrollment	449,149	228,523	220,563	244,235	81,931	88,351	19,309	898	14,165	23,830	105	62,715	201,259
	Science	0.4	0.5	0.3	0.2	1.0	0.5	0.3	0.4	0.3	0.5	1.9	0.9	0.6

* Enrollment as reported during the testing windows for grades 4, 7, and 11.

ILLINOIS STANDARDS ACHIEVEMENT TEST (ISAT)

The following tables show the percentages of student scores in each of four performance levels. These levels were established with the help of Illinois educators who teach the grade levels and learning areas tested. Due to rounding, the sum of the percentages in the four performance levels may not always equal 100.

- Level 1 -- Academic Warning - Student work demonstrates limited knowledge and skills in the subject. Because of major gaps in learning, students apply knowledge and skills ineffectively.
- Level 2 -- Below Standards - Student work demonstrates basic knowledge and skills in the subject. However, because of gaps in learning, students apply knowledge and skills in limited ways.
- Level 3 -- Meets Standards - Student work demonstrates proficient knowledge and skills in the subject. Students effectively apply knowledge and skills to solve problems.
- Level 4 -- Exceeds Standards - Student work demonstrates advanced knowledge and skills in the subject. Students creatively apply knowledge and skills to solve problems and evaluate the results.

Grade 3

Grade 3 - All

Levels	Reading				Mathematics			
	1	2	3	4	1	2	3	4
School	1.7	16.2	34.2	47.9	0.0	3.4	37.6	59.0
District	3.5	17.7	41.5	37.3	1.0	6.8	36.0	56.3
State	5.4	20.9	45.9	27.8	2.9	10.7	44.7	41.7

Grade 3 - Gender

Levels	Reading				Mathematics				
	1	2	3	4	1	2	3	4	
Male	School	2.8	12.7	38.0	46.5	0.0	2.8	36.6	60.6
	District	4.1	17.1	41.5	37.3	0.5	7.3	35.2	57.0
	State	6.6	22.7	45.6	25.1	3.1	10.6	43.2	43.0
Female	School	0.0	21.7	28.3	50.0	0.0	4.3	39.1	56.5
	District	2.5	18.6	41.5	37.3	1.7	5.9	37.3	55.1
	State	4.1	19.1	46.2	30.7	2.7	10.9	46.2	40.2

Grade 3 - Racial/Ethnic Background

Levels	Reading				Mathematics				
	1	2	3	4	1	2	3	4	
White	School	0.0	10.7	26.7	62.7	0.0	2.7	25.3	72.0
	District	0.0	7.7	41.5	50.8	0.0	3.6	24.1	72.3
	State	2.2	11.9	46.6	39.3	1.0	5.3	39.0	54.7
Black	School								
	District								
	State	9.8	31.1	46.2	12.9	7.4	20.0	51.9	20.6
Hispanic	School	6.1	33.3	51.5	9.1	0.0	6.1	66.7	27.3
	District	11.1	44.4	38.3	6.2	2.5	14.8	61.7	21.0
	State	9.7	35.1	44.2	11.0	4.1	16.7	54.3	24.9
Asian/Pacific Islander	School								
	District	0.0	17.6	64.7	17.6	0.0	5.9	52.9	41.2
	State	1.7	10.0	43.5	44.9	0.9	3.5	27.3	68.4
Native American	School								
	District								
	State	3.8	19.8	48.3	28.1	2.3	8.0	46.8	43.0
Multiracial/Ethnic	School								
	District	11.1	5.6	33.3	50.0	5.6	5.6	33.3	55.6
	State	3.7	17.3	48.2	30.7	2.1	9.0	45.8	43.1

Grade 3 - Limited-English-Proficient

Levels	Reading				Mathematics			
	1	2	3	4	1	2	3	4
School	6.9	37.9	48.3	6.9	0.0	3.4	69.0	27.6
District	11.7	48.1	36.4	3.9	2.6	14.3	63.6	19.5
State	14.9	47.0	34.1	4.1	5.9	22.6	55.1	16.4

Grade 3 - Students with Disabilities

Levels	Reading				Mathematics				
	1	2	3	4	1	2	3	4	
IEP	School	0.0	21.4	50.0	28.6	0.0	7.1	42.9	50.0
	District	12.5	31.3	34.4	21.9	6.3	18.8	37.5	37.5
	State	18.9	36.6	33.4	11.1	9.3	22.4	46.7	21.7
Non-IEP	School	1.9	15.5	32.0	50.5	0.0	2.9	36.9	60.2
	District	2.5	16.1	42.3	39.1	0.4	5.4	35.8	58.4
	State	3.4	18.6	47.7	30.2	2.0	9.1	44.4	44.5

Grade 3 - Economically Disadvantaged

Levels	Reading				Mathematics				
	1	2	3	4	1	2	3	4	
Free/Reduced Price Lunch	School	4.9	29.3	41.5	24.4	0.0	4.9	58.5	36.6
	District	9.0	36.0	38.7	16.2	2.7	13.5	52.3	31.5
	State	9.0	30.9	46.4	13.7	5.0	16.8	52.7	25.5
Not Eligible	School	0.0	9.2	30.3	60.5	0.0	2.6	26.3	71.1
	District	0.5	7.5	43.0	49.0	0.0	3.0	27.0	70.0
	State	1.6	10.4	45.3	42.7	0.8	4.3	36.2	58.7

Grade 4**Grade 4 - All**

Levels	Reading				Mathematics				Science			
	1	2	3	4	1	2	3	4	1	2	3	4
School	0.0	15.4	45.2	39.4	1.0	3.8	51.9	43.3	0.0	4.8	57.7	37.5
District	0.7	13.7	46.6	39.1	1.0	3.9	52.9	42.2	0.0	6.8	65.6	27.6
State	1.2	25.1	44.8	28.9	1.1	12.9	57.7	28.2	2.8	20.5	59.6	17.0

Grade 4 - Gender

Levels	Reading				Mathematics				Science				
	1	2	3	4	1	2	3	4	1	2	3	4	
Male	School	0.0	15.1	47.2	37.7	0.0	3.8	49.1	47.2	0.0	0.0	56.6	43.4
	District	0.6	15.5	47.7	36.1	1.3	3.2	52.3	43.2	0.0	4.5	67.1	28.4
	State	1.7	27.7	43.9	26.7	1.3	13.3	56.1	29.3	3.2	20.1	57.4	19.4
Female	School	0.0	15.7	43.1	41.2	2.0	3.9	54.9	39.2	0.0	9.8	58.8	31.4
	District	0.7	11.8	45.4	42.1	0.7	4.6	53.6	41.2	0.0	9.2	64.1	26.8
	State	0.7	22.3	45.7	31.2	0.9	12.5	59.5	27.1	2.5	21.0	62.0	14.6

Grade 4 - Racial/Ethnic Background

Levels	Reading				Mathematics				Science				
	1	2	3	4	1	2	3	4	1	2	3	4	
White	School	0.0	7.8	48.1	44.2	0.0	1.3	50.6	48.1	0.0	1.3	54.5	44.2
	District	0.0	8.2	45.2	46.6	0.0	2.4	47.6	50.0	0.0	2.4	63.9	33.7
	State	0.5	15.1	45.0	39.4	0.5	6.6	54.4	38.5	0.8	10.2	63.7	25.4
Black	School												
	District												
	State	2.3	40.9	44.4	12.4	2.7	25.7	61.3	10.3	7.2	39.9	49.2	3.7
Hispanic	School	0.0	44.4	50.0	5.6	0.0	11.1	77.8	11.1	0.0	11.1	83.3	5.6
	District	3.1	29.7	57.8	9.4	1.5	7.7	76.9	13.8	0.0	18.5	75.4	6.2
	State	2.1	38.8	45.3	13.9	1.5	18.7	65.5	14.2	4.5	31.2	58.6	5.7
Asian/Pacific Islander	School												
	District												
	State	0.4	10.7	39.6	49.2	0.5	4.2	41.2	54.1	1.3	9.1	57.7	31.9
Native American	School												
	District												
	State	0.7	21.7	44.9	32.6	0.4	13.0	59.8	26.8	3.3	17.4	58.7	20.7
Multiracial/Ethnic	School												
	District	0.0	15.4	38.5	46.2	3.8	3.8	46.2	46.2	0.0	7.7	65.4	26.9
	State	0.5	21.0	47.2	31.2	0.6	11.4	59.9	28.0	1.7	17.2	63.0	18.1

Grade 4 - Limited-English-Proficient

Levels	Reading				Mathematics				Science			
	1	2	3	4	1	2	3	4	1	2	3	4
School	0.0	41.7	50.0	8.3	0.0	16.7	83.3	0.0	0.0	16.7	83.3	0.0
District	2.6	44.7	44.7	7.9	2.6	7.9	76.3	13.2	0.0	26.3	73.7	0.0
State	4.3	59.7	32.1	3.9	3.0	30.1	60.0	6.9	8.9	45.2	44.2	1.7

Grade 4 - Students with Disabilities

Levels	Reading				Mathematics				Science				
	1	2	3	4	1	2	3	4	1	2	3	4	
IEP	School	0.0	23.5	41.2	35.3	5.9	5.9	64.7	23.5	0.0	11.8	64.7	23.5
	District	2.8	36.1	41.7	19.4	5.6	13.9	63.9	16.7	0.0	16.7	72.2	11.1
	State	5.9	54.4	29.8	10.0	5.3	31.9	51.6	11.2	8.1	35.8	48.6	7.4
Non-IEP	School	0.0	13.8	46.0	40.2	0.0	3.4	49.4	47.1	0.0	3.4	56.3	40.2
	District	0.4	10.7	47.2	41.7	0.4	2.6	51.5	45.6	0.0	5.5	64.7	29.8
	State	0.5	20.6	47.1	31.8	0.5	10.0	58.7	30.9	2.0	18.2	61.3	18.5

Grade 4 - Economically Disadvantaged

Levels	Reading				Mathematics				Science				
	1	2	3	4	1	2	3	4	1	2	3	4	
Free/Reduced Price Lunch	School	0.0	28.1	37.5	34.4	0.0	9.4	50.0	40.6	0.0	9.4	59.4	31.3
	District	2.2	23.9	45.7	28.3	2.2	6.5	62.4	29.0	0.0	15.1	68.8	16.1
	State	2.1	37.9	45.7	14.2	1.9	20.4	63.9	13.8	5.0	32.3	56.6	6.2
Not Eligible	School	0.0	9.7	48.6	41.7	1.4	1.4	52.8	44.4	0.0	2.8	56.9	40.3
	District	0.0	9.3	47.0	43.7	0.5	2.8	48.8	47.9	0.0	3.3	64.2	32.6
	State	0.3	12.3	43.9	43.5	0.3	5.4	51.6	42.6	0.7	8.8	62.7	27.8

Grade 5**Grade 5 - All**

Levels	Reading				Mathematics			
	1	2	3	4	1	2	3	4
School	0.0	17.1	48.6	34.2	0.0	6.3	70.3	23.4
District	0.0	18.2	46.5	35.2	0.0	9.1	68.3	22.6
State	0.3	25.0	44.7	30.0	0.3	16.3	65.8	17.6

Grade 5 - Gender

Levels	Reading				Mathematics				
	1	2	3	4	1	2	3	4	
Male	School	0.0	21.2	51.9	26.9	0.0	7.7	73.1	19.2
	District	0.0	21.0	46.9	32.1	0.0	9.8	68.1	22.1
	State	0.4	28.5	44.1	27.0	0.4	17.1	64.4	18.0
Female	School	0.0	13.6	45.8	40.7	0.0	5.1	67.8	27.1
	District	0.0	15.4	46.2	38.5	0.0	8.3	68.6	23.1
	State	0.2	21.3	45.5	33.1	0.3	15.4	67.3	17.1

Grade 5 - Racial/Ethnic Background

Levels	Reading				Mathematics				
	1	2	3	4	1	2	3	4	
White	School	0.0	12.5	45.0	42.5	0.0	3.8	66.3	30.0
	District	0.0	12.1	45.6	42.3	0.0	4.7	67.0	28.4
	State	0.2	14.8	45.1	40.0	0.1	9.1	67.0	23.8
Black	School								
	District								
	State	0.6	41.8	43.4	14.2	0.9	32.2	61.2	5.7
Hispanic	School	0.0	29.6	55.6	14.8	0.0	11.1	85.2	3.7
	District	0.0	37.7	49.4	13.0	0.0	21.8	74.4	3.8
	State	0.4	38.6	45.9	15.0	0.4	22.5	69.4	7.7
Asian/Pacific Islander	School								
	District	0.0	0.0	60.0	40.0	0.0	0.0	40.0	60.0
	State	0.0	10.8	38.4	50.8	0.1	4.8	51.1	44.1
Native American	School								
	District								
	State	0.0	24.9	44.6	30.5	0.0	13.4	70.6	16.0
Multiracial/Ethnic	School								
	District	0.0	14.3	35.7	50.0	0.0	7.1	78.6	14.3
	State	0.3	21.4	47.1	31.2	0.2	14.6	68.6	16.5

Grade 5 - Limited-English-Proficient

Levels	Reading				Mathematics			
	1	2	3	4	1	2	3	4
School	0.0	38.5	61.5	0.0	0.0	15.4	84.6	0.0
District	0.0	62.5	37.5	0.0	0.0	35.0	65.0	0.0
State	1.1	67.5	28.3	3.1	1.1	40.4	55.7	2.8

Grade 5 - Students with Disabilities

Levels	Reading				Mathematics				
	1	2	3	4	1	2	3	4	
IEP	School	0.0	52.9	35.3	11.8	0.0	29.4	70.6	0.0
	District	0.0	52.5	40.0	7.5	0.0	42.5	55.0	2.5
	State	1.6	60.4	29.9	8.1	1.6	42.9	50.5	4.9
Non-IEP	School	0.0	10.6	51.1	38.3	0.0	2.1	70.2	27.7
	District	0.0	13.3	47.5	39.2	0.0	4.3	70.3	25.4
	State	0.1	19.5	47.1	33.4	0.1	12.1	68.2	19.5

Grade 5 - Economically Disadvantaged

Levels	Reading				Mathematics				
	1	2	3	4	1	2	3	4	
Free/Reduced Price Lunch	School	0.0	28.9	52.6	18.4	0.0	13.2	76.3	10.5
	District	0.0	31.0	52.0	17.0	0.0	17.0	73.0	10.0
	State	0.5	38.3	45.8	15.4	0.6	25.5	66.6	7.4
Not Eligible	School	0.0	11.0	46.6	42.5	0.0	2.7	67.1	30.1
	District	0.0	12.4	44.0	43.6	0.0	5.5	66.2	28.3
	State	0.1	12.2	43.8	43.9	0.1	7.4	65.1	27.4

2010 ADEQUATE YEARLY PROGRESS (AYP) Status Report

Is this school making Adequate Yearly Progress (AYP)?	Yes
Is this school making AYP in Reading?	Yes
Is this school making AYP in Mathematics?	Yes

Has this school been identified for School Improvement according to the AYP specifications of the federal No Child Left Behind Act?	No
2010-11 Federal Improvement Status	
2010-11 State Improvement Status	

	Percent Tested on State Tests				Percent Meeting/Exceeding Standards *						Other Indicators			
	Reading		Mathematics		Reading			Mathematics			Attendance Rate		Graduation Rate	
	%	Met AYP	%	Met AYP	%	Safe Harbor Target **	Met AYP	%	Safe Harbor Target **	Met AYP	%	Met AYP	%	Met AYP
State AYP Minimum Target	95.0		95.0		77.5			77.5			91.0		80.0	
All	100.0	Yes	100.0	Yes	84.0		Yes	94.8		Yes	94.9	Yes		
White	100.0	Yes	100.0	Yes	89.6		Yes	96.5		Yes				
Black														
Hispanic	100.0	Yes	100.0	Yes	65.8	70.9	Yes	91.8		Yes	94.9			
Asian/Pacific Islander														
Native American														
Multiracial /Ethnic														
LEP	100.0	Yes	100.0	Yes	59.6	58.9	Yes	90.4		Yes	95.0			
Students with Disabilities	100.0	Yes	100.0	Yes	68.5		Yes	81.5		Yes				
Economically Disadvantaged	100.0	Yes	100.0	Yes	70.4	68.1	Yes	89.8		Yes	94.2			

Four Conditions Are Required For Making Adequate Yearly Progress (AYP):

1. At least 95% tested in reading and mathematics for every student group. If the current year participation rate is less than 95%, this condition may be met if the average of the current and preceding year rates is at least 95%, or if the average of the current and two preceding years is at least 95%. Only actual participation rates are printed. If the participation rate printed is less than 95% and yet this school makes AYP, it means that the 95% condition was met by averaging.
2. At least 77.5% meeting/exceeding standards in reading and mathematics for every group. For any group with less than 77.5% meeting/exceeding standards, a 95% confidence interval was applied. Subgroups may meet this condition through Safe Harbor provisions. ***
3. At least 91% attendance rate for non-high schools and at least 80% graduation rate for high schools.

* Includes only students enrolled as of 05/01/2009.

** Safe Harbor Targets of 77.5% or above are not printed.

*** Subgroups with fewer than 45 students are not reported. Safe Harbor only applies to subgroups of 45 or more. In order for Safe Harbor to apply, a subgroup must decrease by 10% the percentage of scores that did not meet state standards from the previous year plus meet the other indicators (attendance rate for non-high schools and graduation rate for high schools) for the subgroup. For subgroups that do not meet their Safe Harbor Targets, a 75% confidence interval is applied. Safe Harbor allows schools an alternate method to meet subgroup minimum targets on achievement.

PLANNED IMPROVEMENT FOR THE SCHOOL AND DISTRICT

This is the final section of the school report card in which your school and district provide information below on areas of success and areas for planned improvement based on your school's improvement plan.

(For report cards disseminated electronically, this information may be provided in a separate document due to differences in the software used. If you are unable to locate this document, please contact your local school or district office.)

2010 School Report Card**Areas of Success**

- Cotton Creek School met Adequate Yearly Progress (AYP) in all areas.
- Parent contact is consistently at 100%.
- Overall ISAT performance score for Cotton Creek School grades 3-5 is 90.0%. That is 9.1% above the state average of 79.1%
- 3rd grade reading scores, including LEP/IEP students are 82.1%, which is 8.4% above the state average.
- 3rd grade math scores, including LEP/IEP students, are 96.6%, which is 10.3% above the state average.
- 4th grade reading scores, including LEP/IEP students, are 84.6%, which is 10.9% above the state average.
- 4th grade math scores, including LEP/IEP students, are 95.2%, which is 9.2% above the state average.
- 4th grade science scores, 95.2%, including LEP/IEP students, which is 18.5% above the state average.
- 5th grade reading scores are 82.9% including LEP/IEP students, which is 8.2% above the state average.
- 5th grade math scores are 93.7%, including LEP/IEP students, which is 10.3% above the state average.

Areas of Planned Improvement

- Identify and monitor students who did not meet ISAT standards in reading, math, and writing.
- Identify, monitor and support 3rd, 4th, and 5th grade students through benchmark MAP testing to ensure readiness for ISAT testing.
- Provide professional development for staff to align guided reading and academic vocabulary instruction to increase student achievement.
- Provide and monitor specific interventions, using the RtI model for Students with Disabilities who did not meet ISAT goals for Reading and Math in grades 3, 4, and 5.
- Provide and monitor specific interventions, using the RtI model, for students with Limited English Proficiency in reading for grades, 3, 4, and 5.
- Provide and monitor specific interventions, using the RtI model, for students who are Economically Disadvantaged in reading for grades 3, 4, and 5.